

ELIZABETH, NJ

25 SOUTH BROAD STREET

At Pearl Street



JOIN SOME OF THE FOLLOWING TENANTS:



Walgreens

 investorsBank



High volume food market and neighborhood center with parking located along South Broad Street, across the street from Trinitas Regional Medical Center and adjacent to the Union County Courthouse complex.

DEMOGRAPHICS

	1 Mile	3 Mile	5 Mile
Population	65,905	212,000	541,140
Households	21,935	72,241	190,591
Median HH Income	\$38,875	\$44,956	\$46,833
Average HH Income	\$49,551	\$57,004	\$59,794

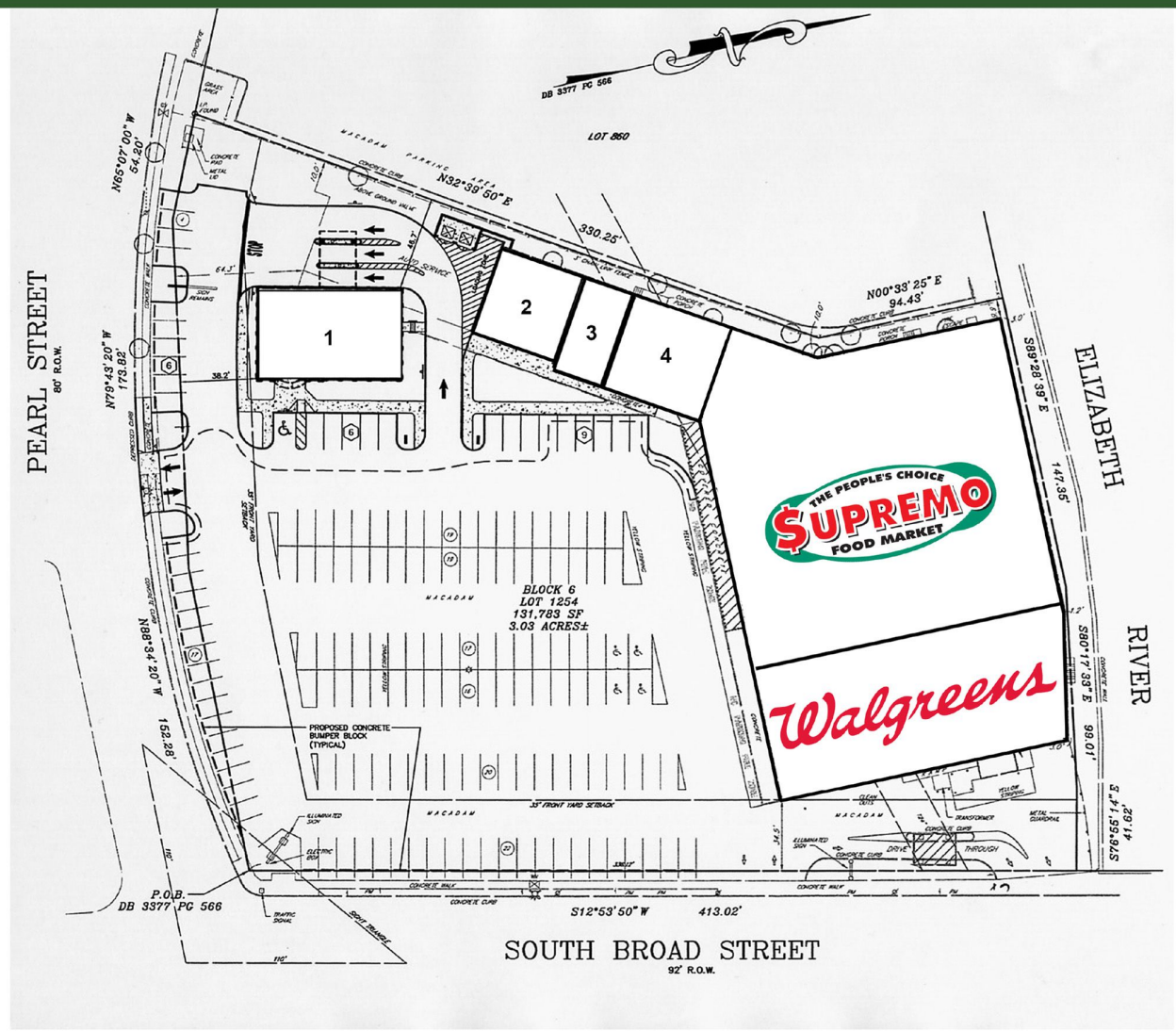


Garden
Commercial

25 SOUTH BROAD STREET

At Pearl Street

FULLY LEASED



Tenants	
	Supremo Food Market
	Walgreens
1	Investors Bank
2	Pollo Campero
3	Sakura Japan
4	Fashion Nail Beauty Spa

LEASING INFORMATION:

Michael Gartenberg
 (973) 467-5000 Ext. 1123
 Retail@GardenHomes.com
 www.GardenCommercial.com

